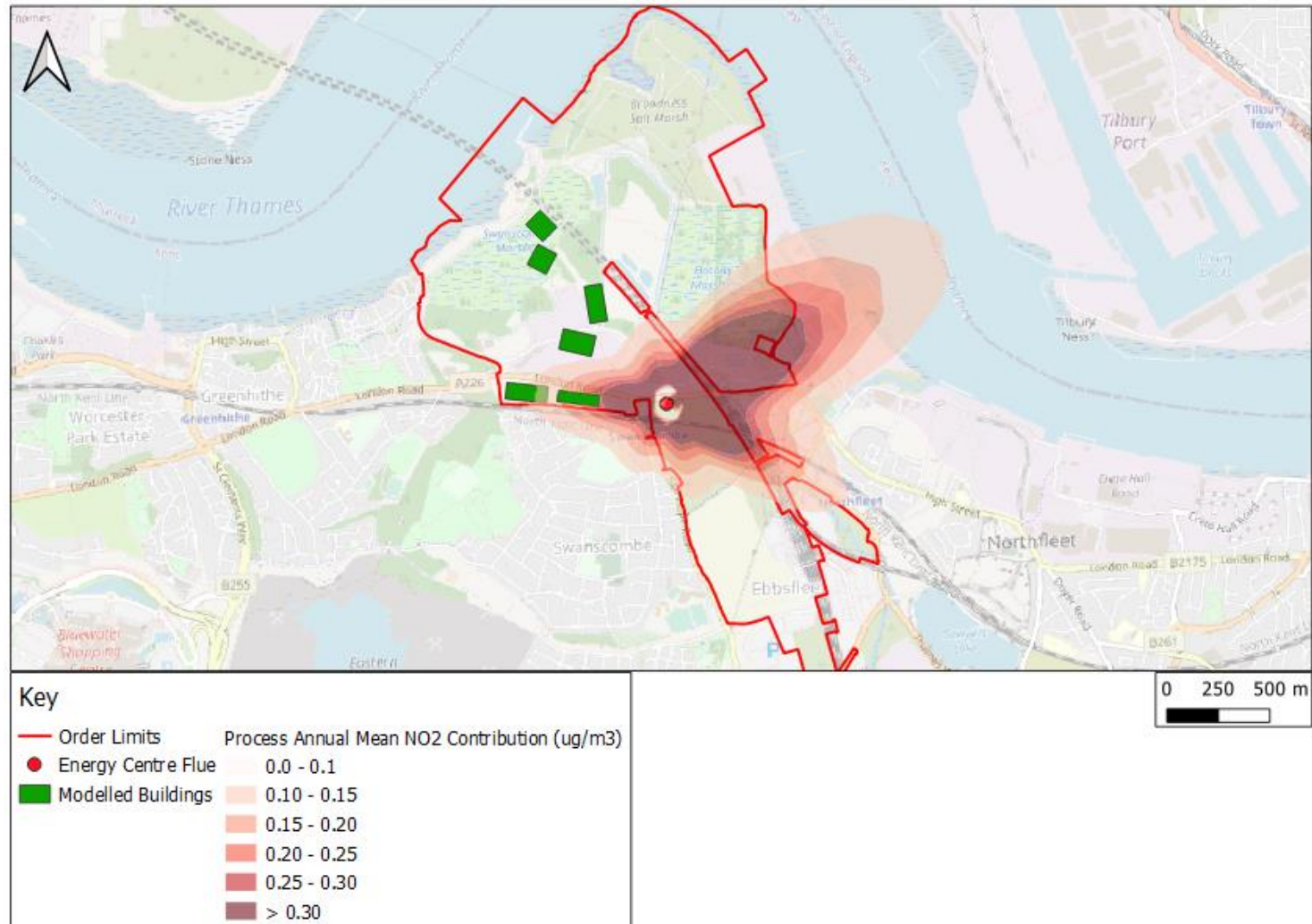
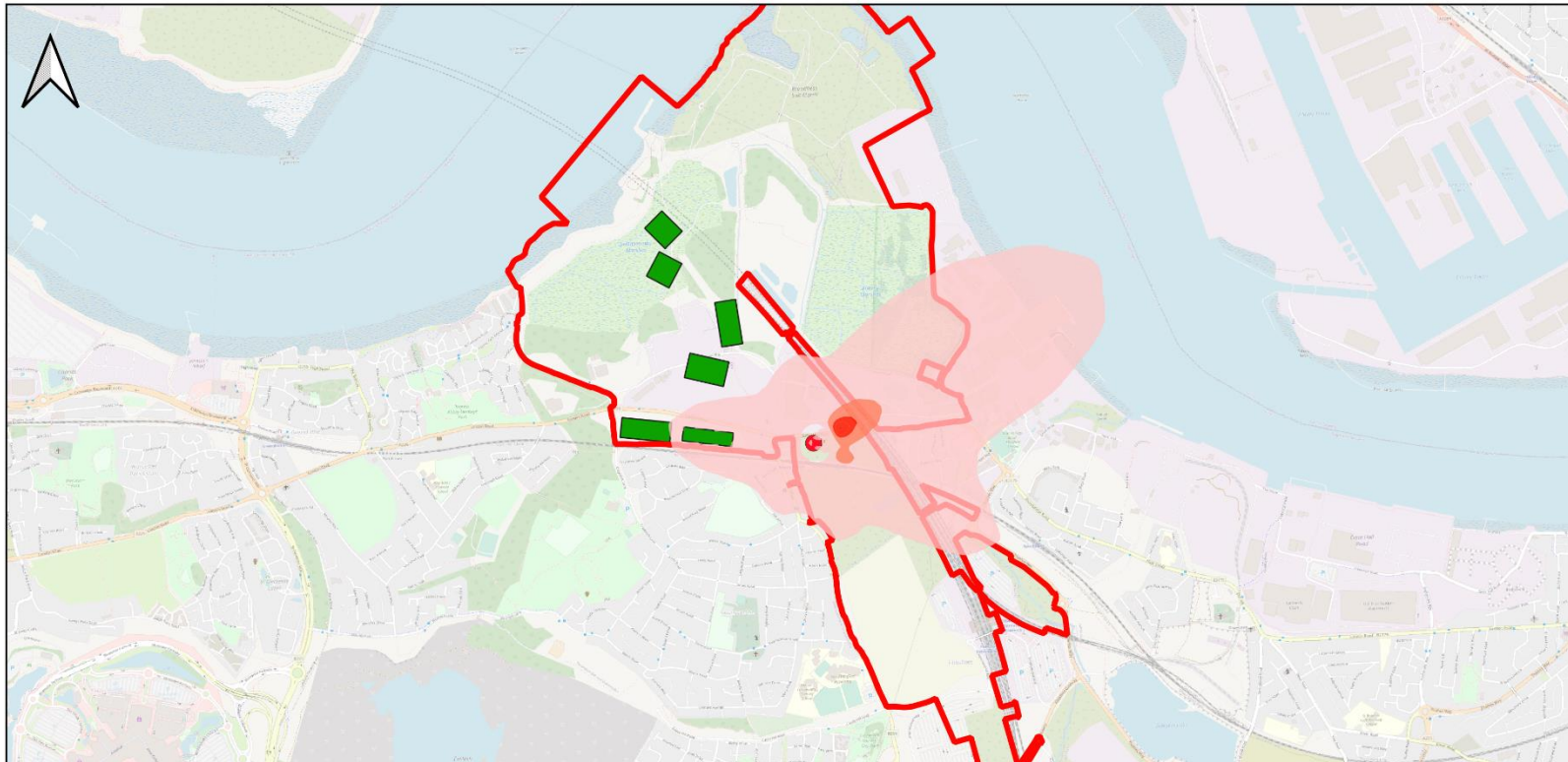



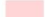






Appendix 16.4 - Contour maps of long term and short term impact on NO₂ from energy centre emissions

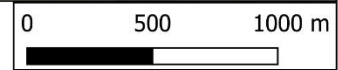
Figure 1 - Long Term impacts from point source emissions





Key

	Order Limits		Operational Impact from Point Source Emissions, NO ₂ Annual Mean (ug/m ³)
	Point Source		0.01 - 0.05
	Modelled Buildings		0.05 - 0.15
			0.15 - 0.25
			0.25 - 0.30



N.B
Assuming 100% NO_x to NO₂
conversion.

Figure 2 - Short Term impacts from point source emissions

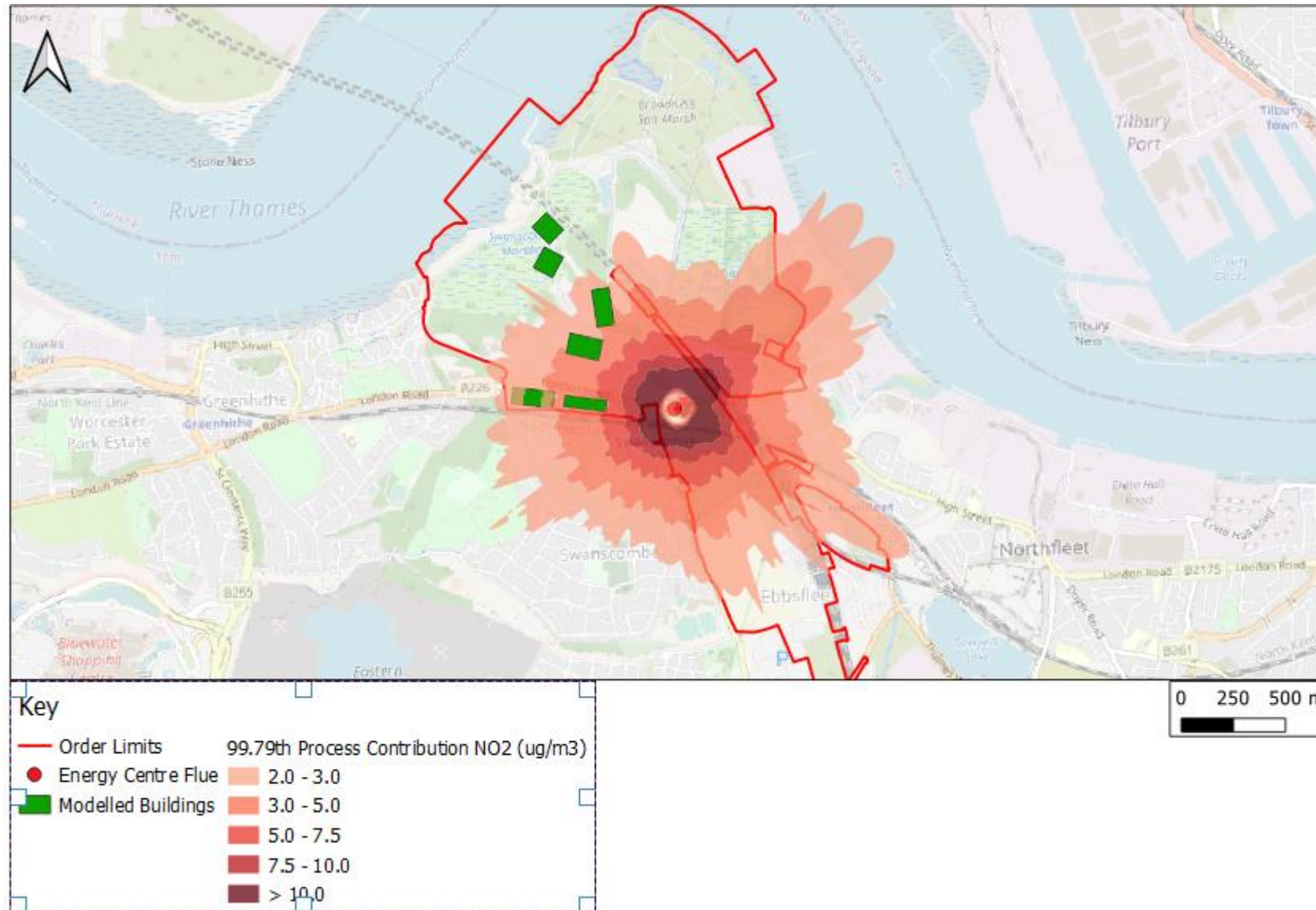


Figure 3 – Long Term impacts from point source emissions on Swanscombe Peninsula SSSI

